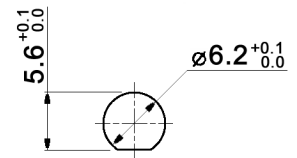


**CONTACT ARRANGEMENT**

code for x	function	toggle towards keyway	toggle opposite to keyway
N	On-On	1-2, 4-5, 7-8, 10-11	2-3, 5-6, 8-9, 11-12
R	Mom-On		

**PANEL MOUNTING**



code for x	function	toggle towards keyway	toggle in center	toggle opposite to keyway
P	On-Off-On			
S	Mom-Off-Mom	1-2, 4-5, 7-8, 10-11	open	2-3, 5-6, 8-9, 11-12
T	Mom-Off-On			
PA	On-On-On			
SA	Mom-On-Mom	1-2, 4-5, 7-8, 10-11	2-3, 4-5, 7-8, 11-12	2-3, 5-6, 8-9, 11-12
TA	Mom-On-On			

**Specifications:**

- Contact rating:** 3A, 250V AC / 6A, 125V AC  
 4A, 30V DC / 5A, 12V DC  
 6A, 6V DC
- Contact resistance:** 20mOhm max.
- Insulation resistance:** 1 000MOhm min. at 500V DC
- Dielectric strength:** 1 500V, 50Hz for the duration of 1 minute
- Operating temperature:** -45°C to +140°C
- Mechanical life:** min. 200 000 cycles (SA, TA: 100 000 cycles)
- Soldering conditions:** hand-soldering: max.: 420°C, 3sec., 60W  
 auto-soldering: max.: 270°C, 5sec.
- Mounting instruction:** max. torque: 49Ncm
- Material:** Terminal: brass, C1020 silver plated  
 Case: DAP  
 Housing: stainless steel, CNS9265  
 Bushing: copper alloy, C3604BD nickel plated  
 Actuator: copper alloy, C3604BD chrome plated
- Included accessories:** 1 pc. nut M6x0.75, nickel plated, 9mm wrench size  
 1 pc. tooth washer  
 1 pc. O-ring
- Sealing:** IP 67



Tolerances: 0.00: ±0.25mm 0.0: ±0.40mm		Date	Name	<b>MTE 406 x</b>
		11/09	dr	
Dimension	01/11	dr	<b>knitter-switch</b>	<b>30 19 59</b>
Sealing	12/10	dr		
Modifications	Date	Name		1/1